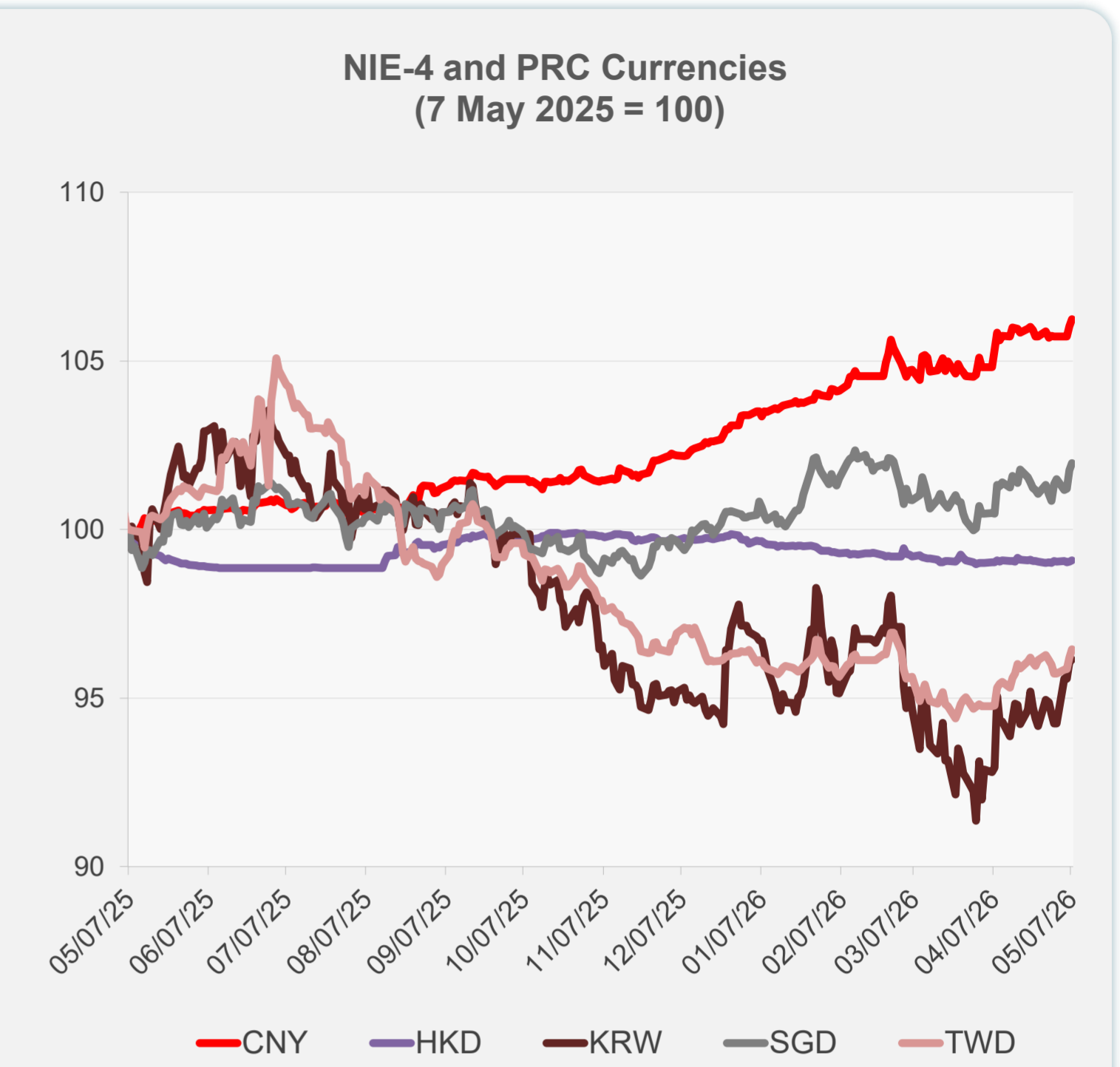
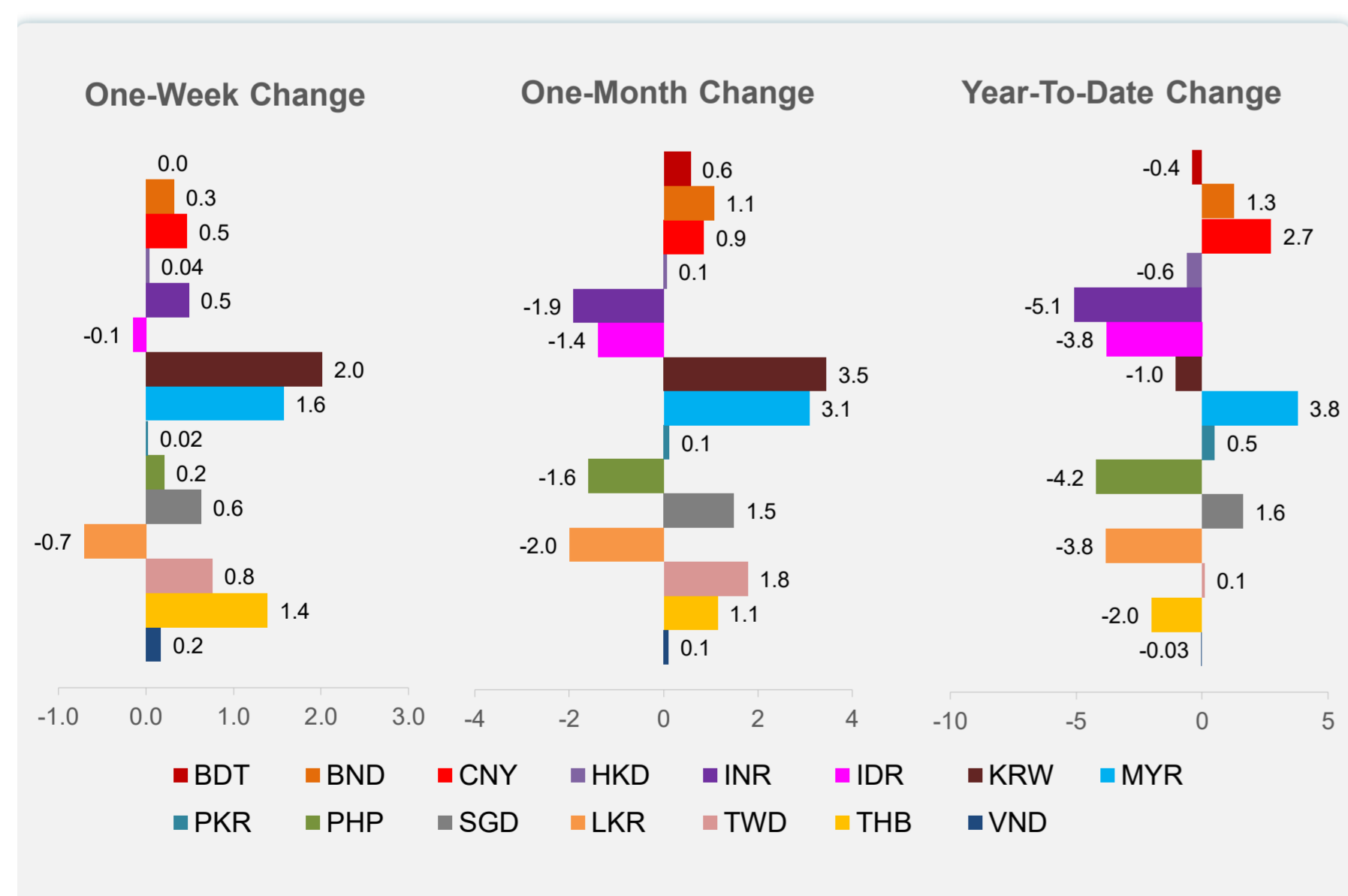
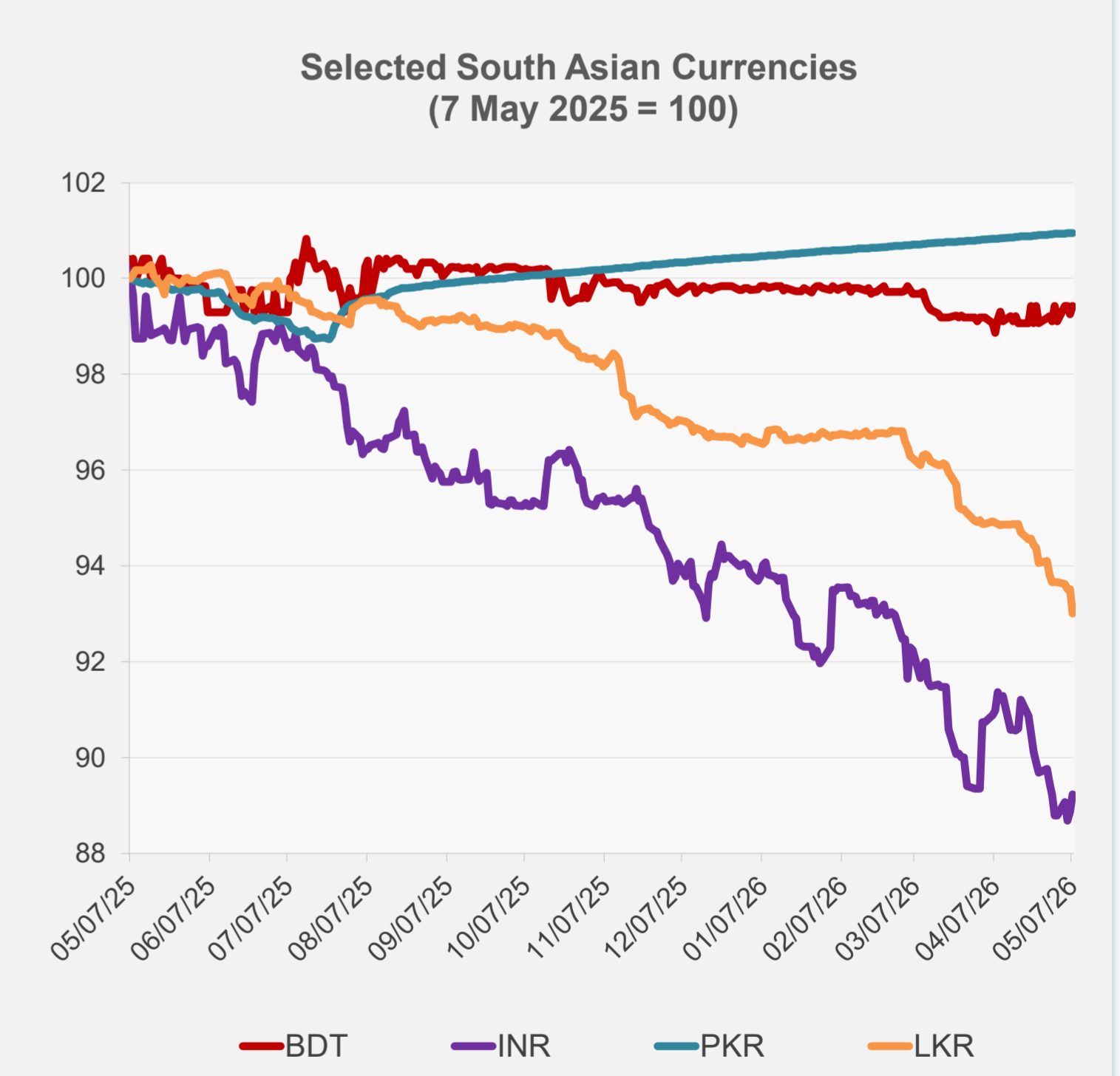
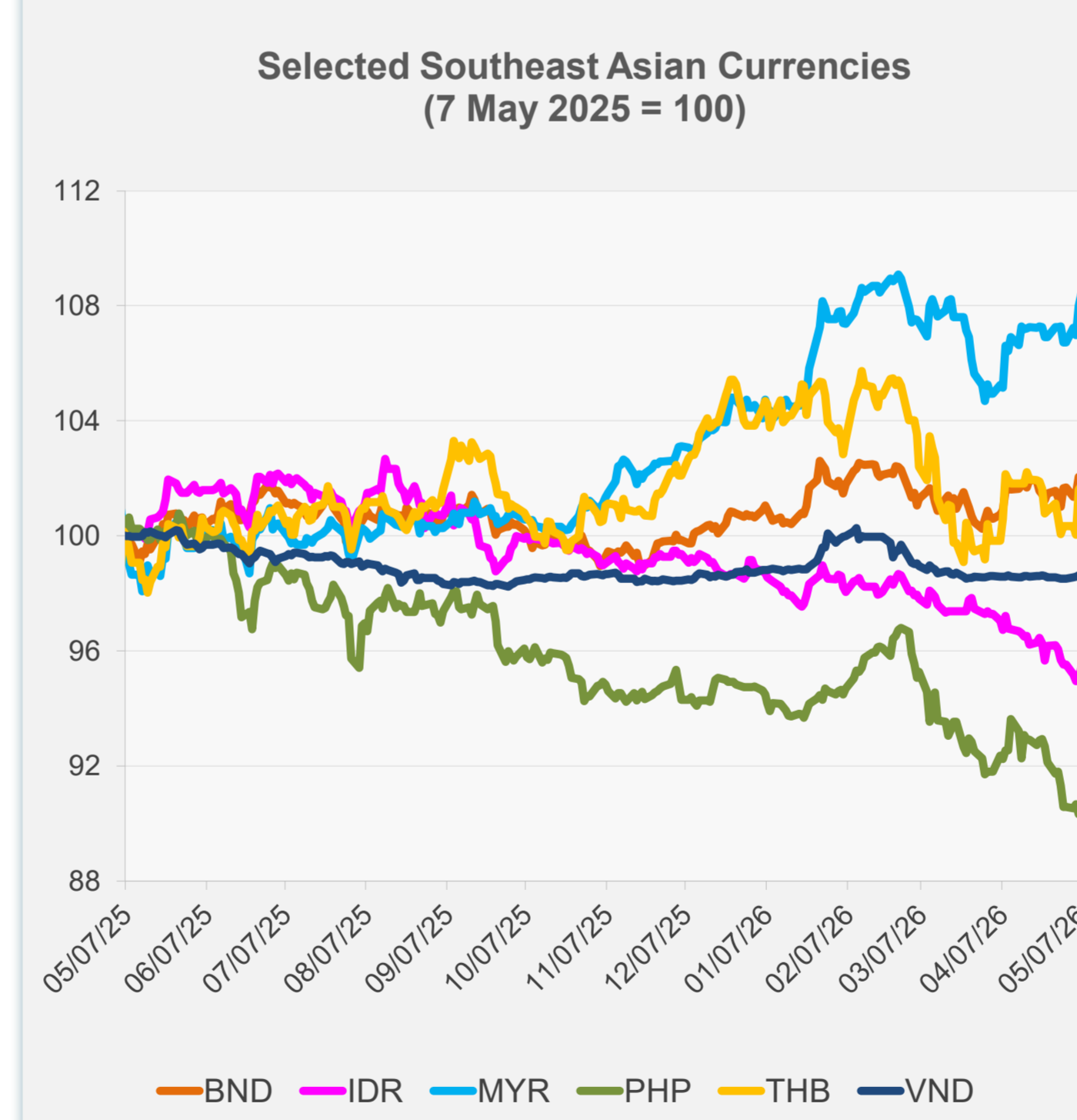


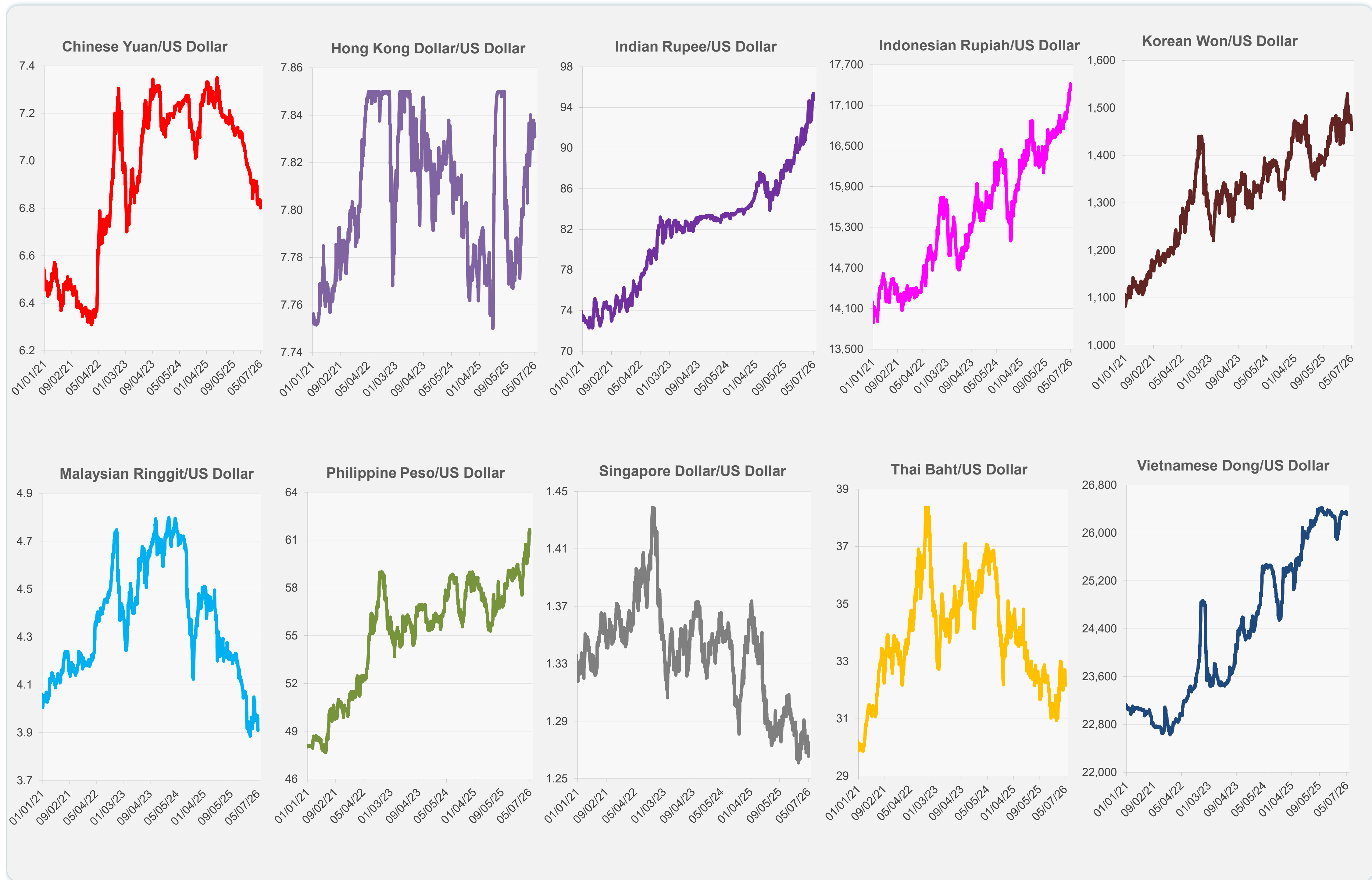
	Latest Closing	% change from Previous Day	% change from 01-Jan-26
Euro	0.85	0.17	0.28
Japanese yen (JPY)	156.27	0.22	-0.19
Bangladeshi taka (BDT)	122.70	0.18	-0.37
Brunei dollar (BND)	1.27	-0.06	1.25
Chinese yuan (CNY)	6.80	0.19	2.74
Hong Kong dollar (HKD)	7.83	0.06	-0.61
Indian rupee (INR)	94.78	0.41	-5.06
Indonesian rupiah (IDR)	17,335.00	0.29	-3.81
Korean won (KRW)	1,454.00	0.08	-1.03
Malaysian ringgit (MYR)	3.91	0.38	3.79
Pakistan rupee (PKR)	278.70	0.00	0.50
Philippine peso (PHP)	61.38	0.49	-4.19
Singapore dollar (SGD)	1.27	0.21	1.62
Sri Lanka rupee (LKR)	321.88	-0.54	-3.81
Taipei,China NT dollar (TWD)	31.41	0.25	0.09
Thai baht (THB)	32.15	0.13	-2.01
Vietnamese dong (VND)	26,309.00	0.06	-0.03



NIE = Newly Industrialized Economies



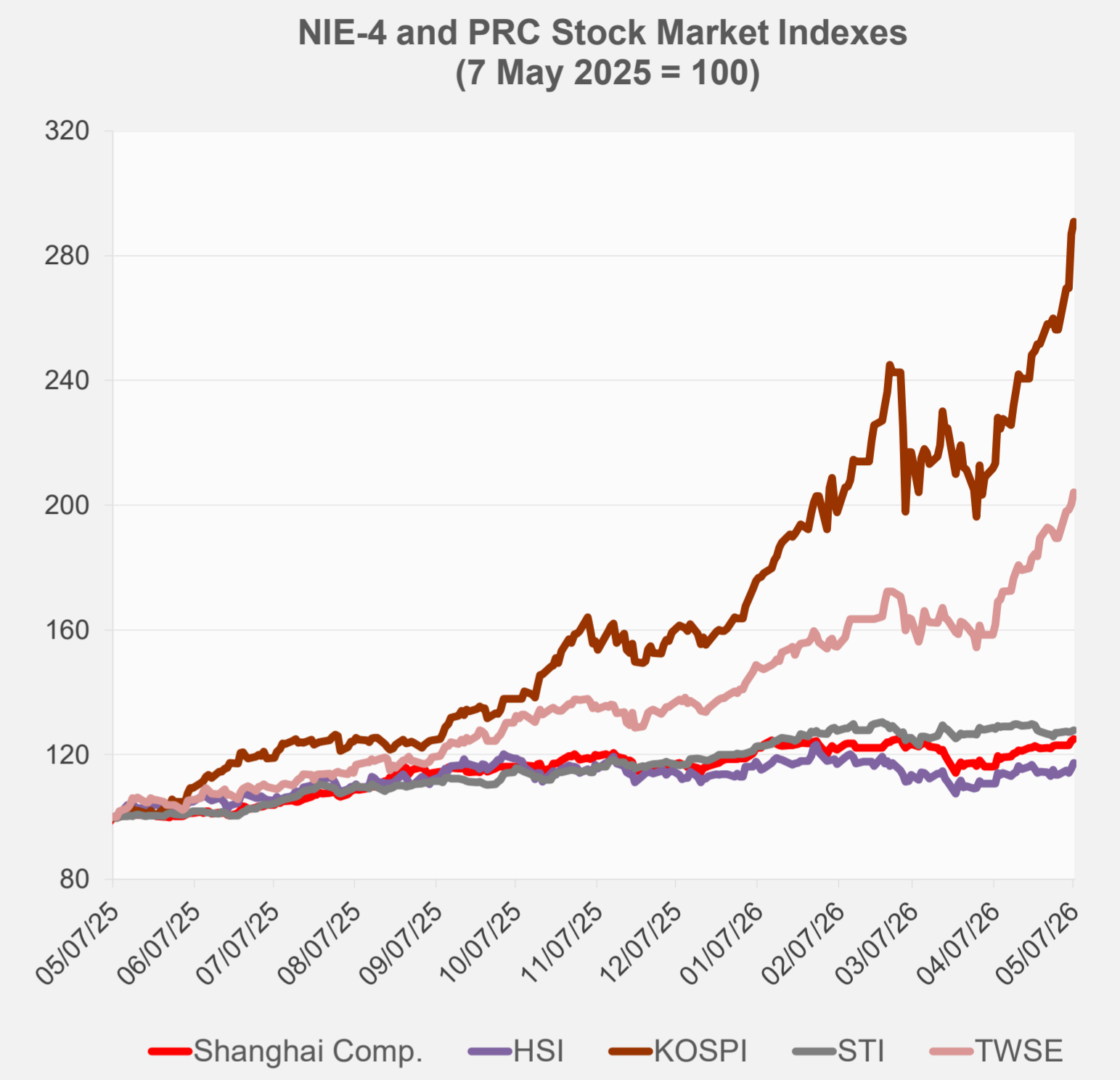
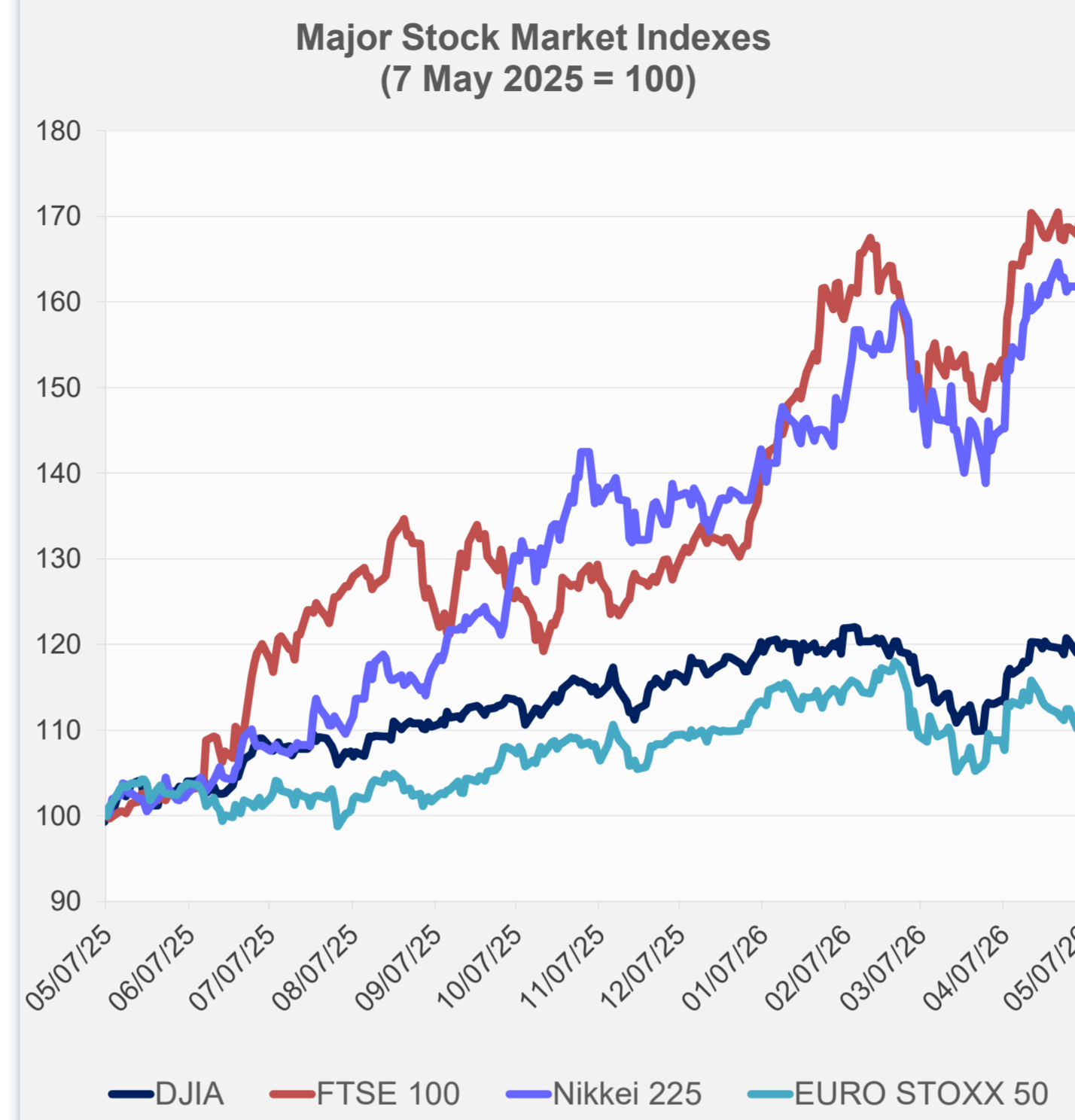
Note: Negative/Decreasing values indicate depreciation of local currency, and positive/increasing values indicate appreciation.  
Source: ADB calculations using data from Bloomberg and Haver Analytics.



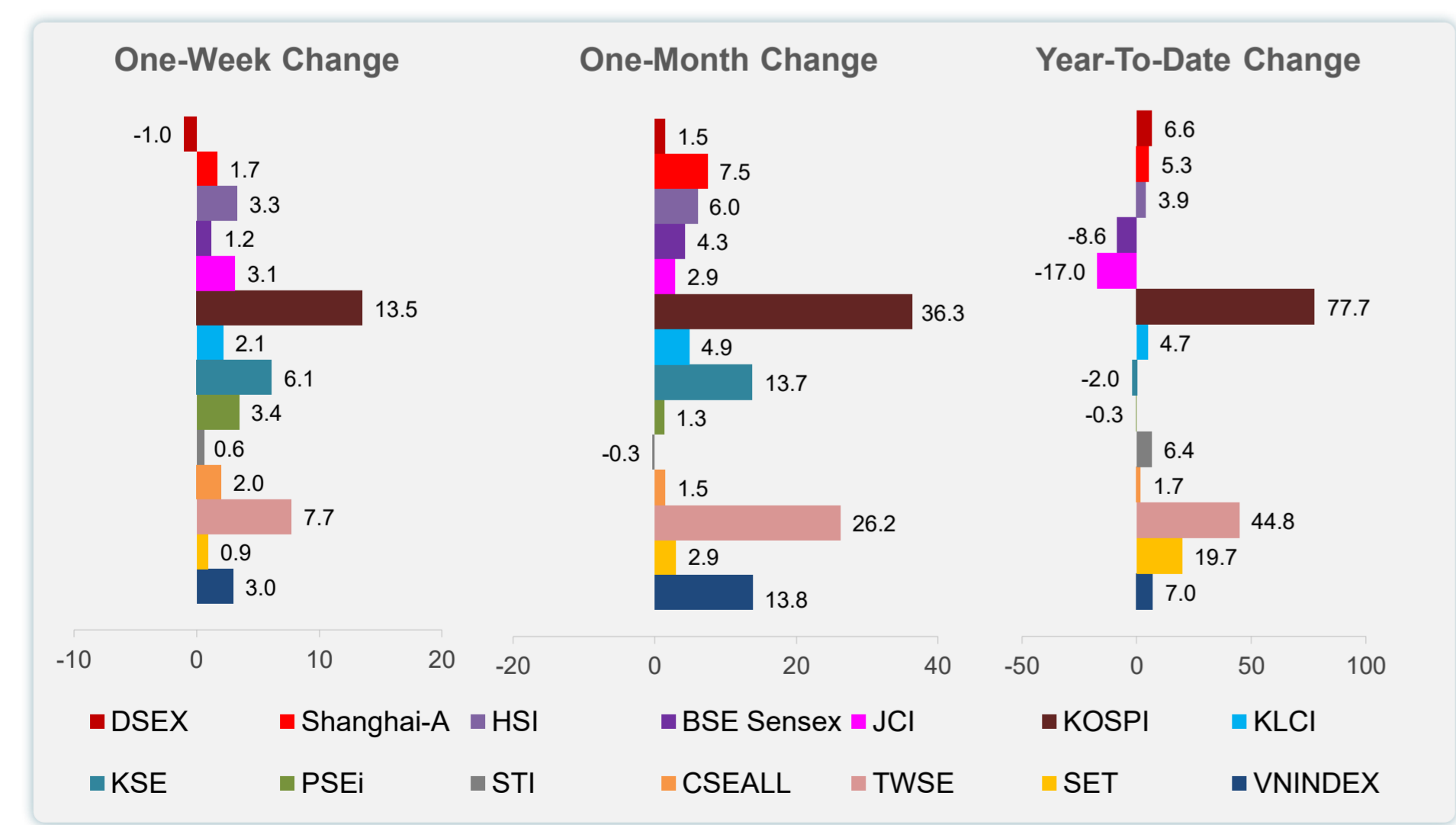
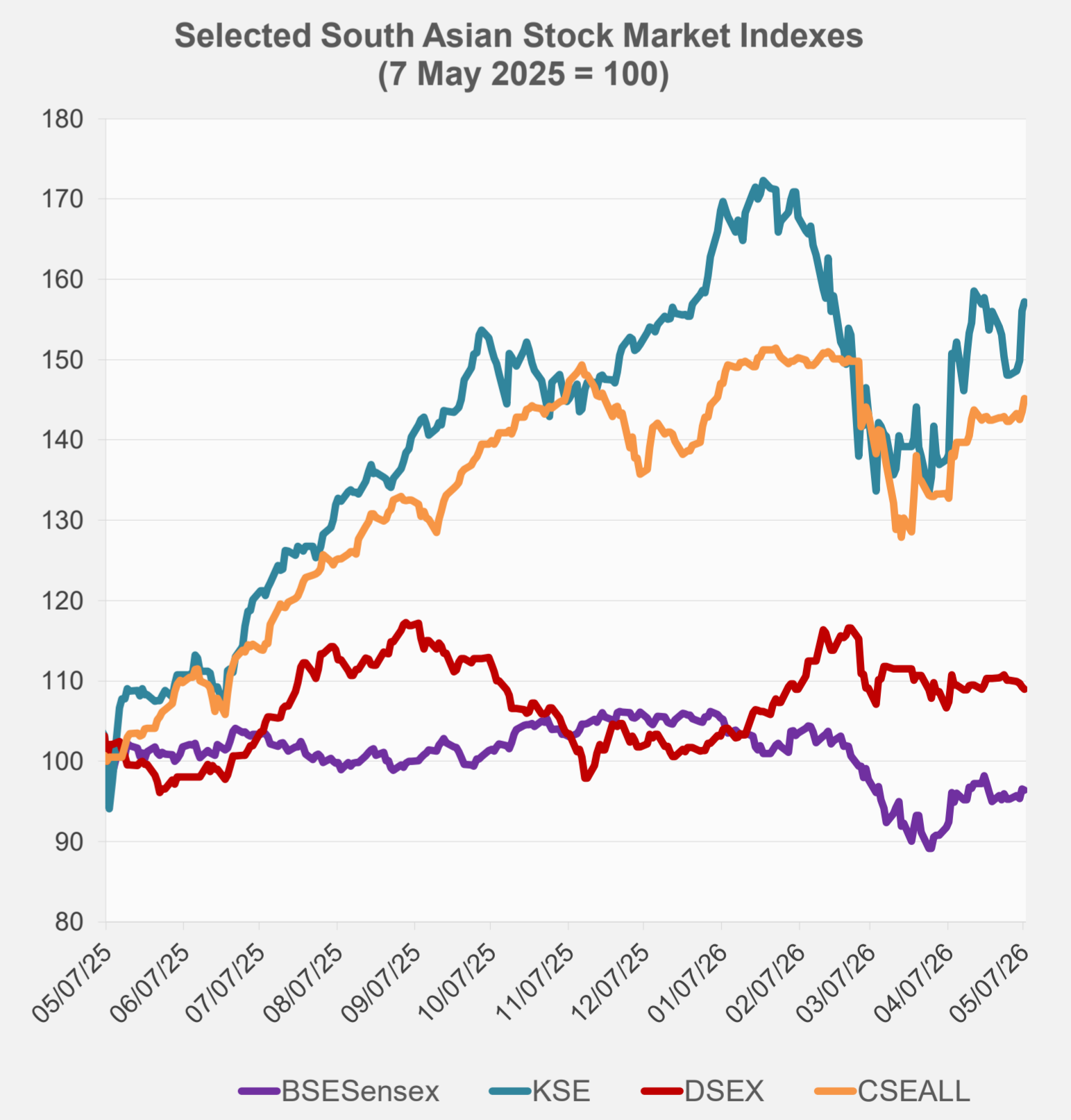
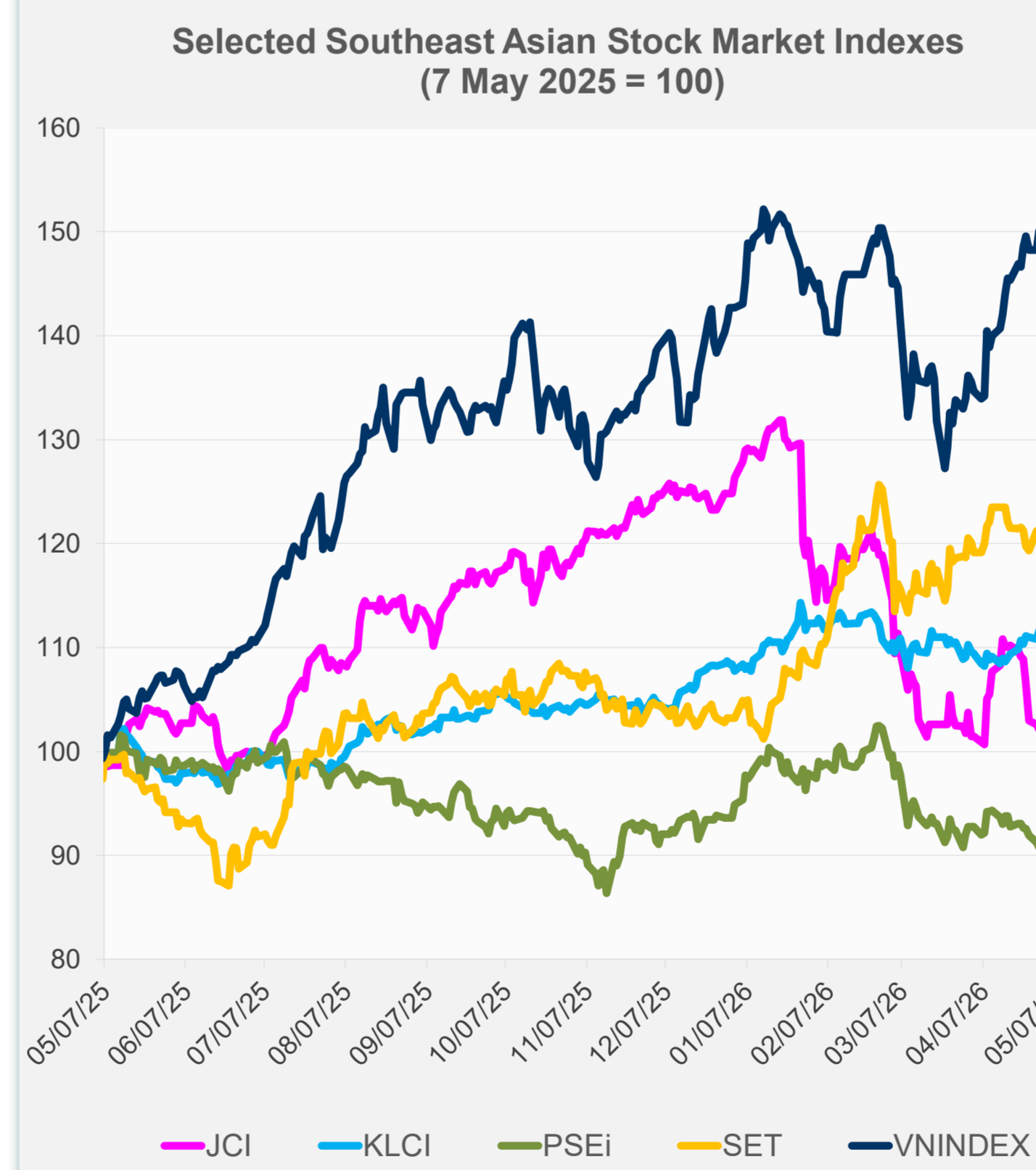
Source: Haver Analytics.

Daily Market Watch  
**STOCK INDEXES**

	Latest Closing	% change from Previous Day	% change from 01-Jan-26
US Dow Jones Ind Avg	49,596.97	-0.63	3.19
US NASDAQ	25,806.20	-0.13	11.03
US S&P 500	7,337.11	-0.38	7.18
UK FTSE 100	15,040.25	0.82	33.55
EURO STOXX 50	5,972.65	-0.90	3.13
Japan NIKKEI 225	62,833.84	5.58	24.82
Bangladesh DSEX	5,234.10	-0.27	6.59
PRC Shanghai Comp.	4,180.09	0.48	5.32
Hong Kong, China HSI	26,626.28	1.57	3.88
India BSE Sensex	77,844.52	-0.15	-8.62
Indonesia JCI	7,174.32	1.15	-17.03
Korea, Rep. of KOSPI	7,490.05	1.43	77.73
Malaysia KLCI	1,758.85	0.11	4.69
Pakistan KSE 100	172,912.10	0.69	-2.02
Philippines PSEi	6,034.27	1.12	-0.31
Singapore STI	4,941.96	0.30	6.37
Sri Lanka CSEALL	22,997.86	1.13	1.65
Taipei, China TWSE	41,933.78	1.93	44.78
Thailand SET	1,507.53	-0.62	19.68
Viet Nam VNINDEX	1,909.01	0.94	6.98



NIE = Newly Industrialized Economies



Sources: ADB calculations using data from Bloomberg and CEIC Data Company.

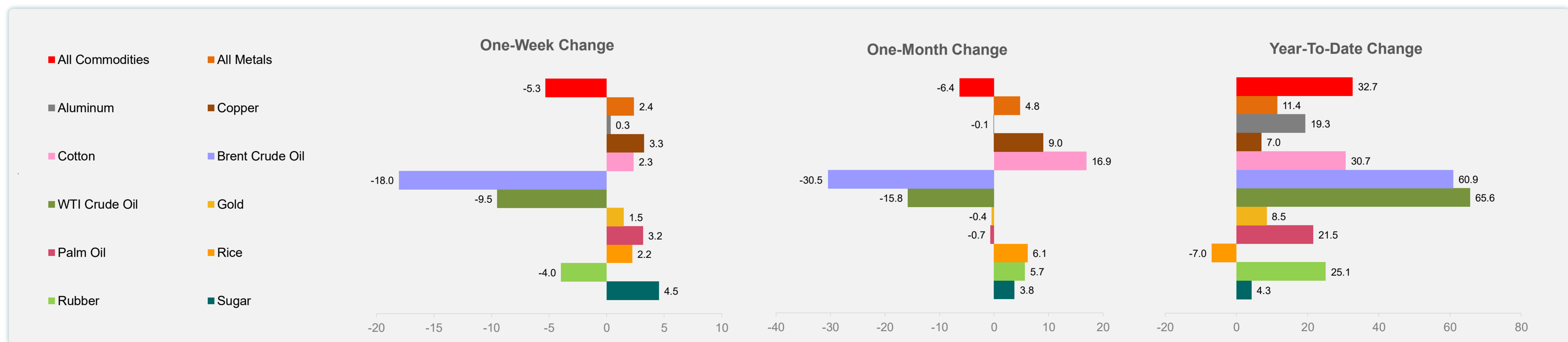
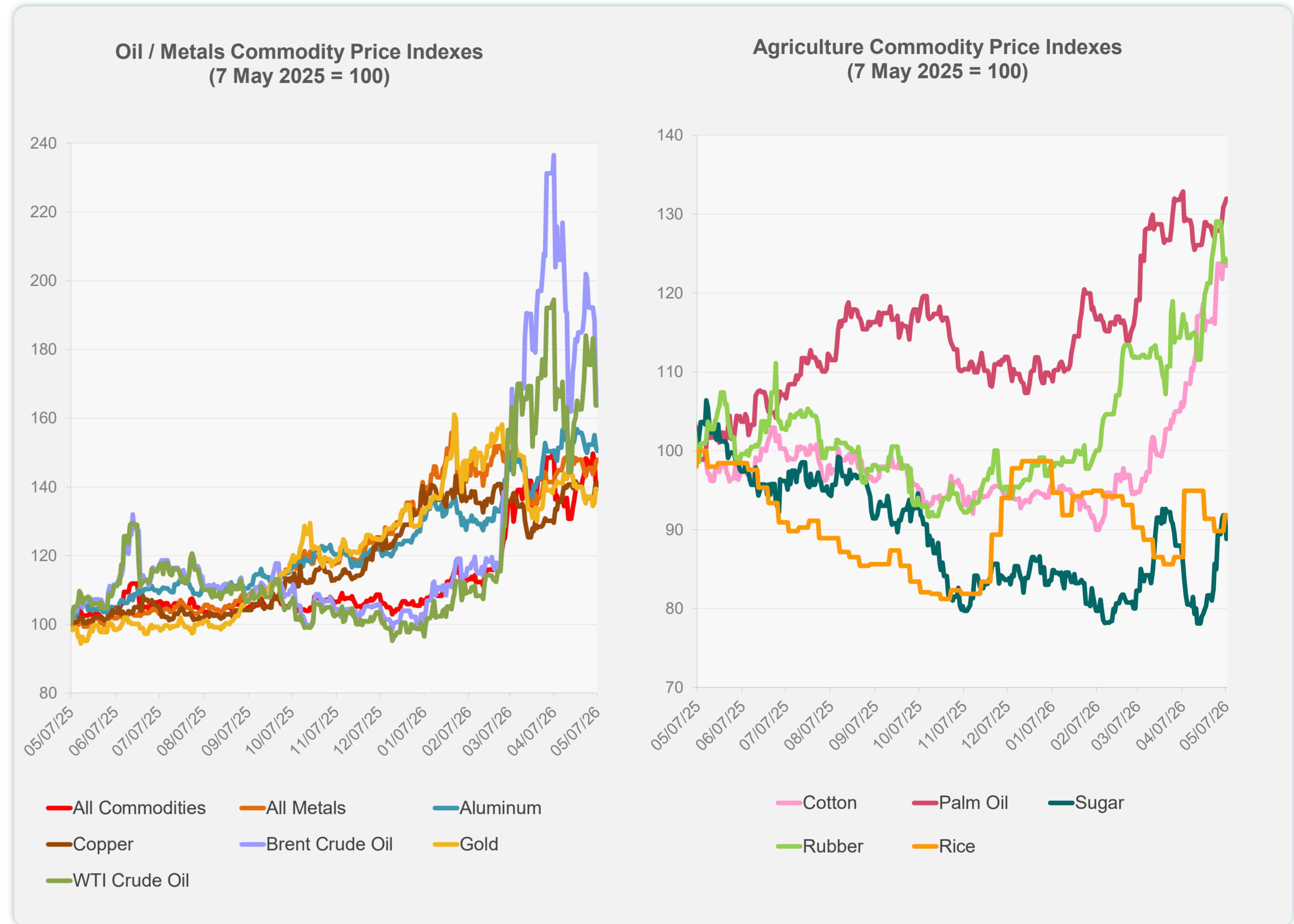


Sources: ADB calculations using data from Bloomberg and CEIC Data Company.

	Unit	Latest Closing	% change from Previous Day	% change from 01-Jan-26
S&P All Commodities	US\$	727.70	-1.01	32.67
S&P All Metals	US\$	494.28	0.61	11.39
Aluminum	US\$/metric ton	3,541.95	-0.91	19.34
Copper	US\$/metric ton	13,331.26	0.08	7.05
Cotton	US cents/lb	81.05	0.00	30.68
Brent Crude Oil	US\$/barrel	100.47	-3.46	60.89
WTI Crude Oil	US\$/barrel	95.08	0.00	65.59
Gold	US\$/troy oz	4,685.80	-0.12	8.48
Palm Oil	US\$/metric tonne	1,177.13	0.47	21.52
Rice <sup>1</sup>	US\$/metric ton	415.00	0.00	-6.95
Rubber <sup>2</sup>	US\$/kg	268.90	-0.37	25.07
Sugar	US cents/lb	15.42	-3.26	4.26

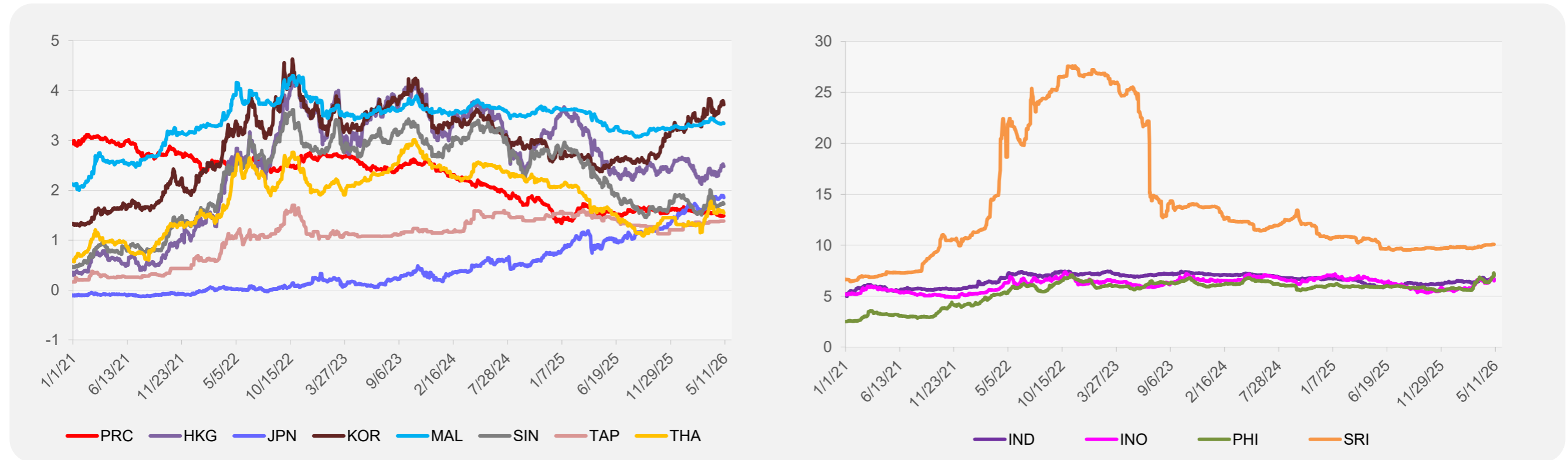
<sup>1</sup> Latest closing price from 6 May 2026.

<sup>2</sup> Singapore Exchange, Ribbed Smoked Sheet Rubber.

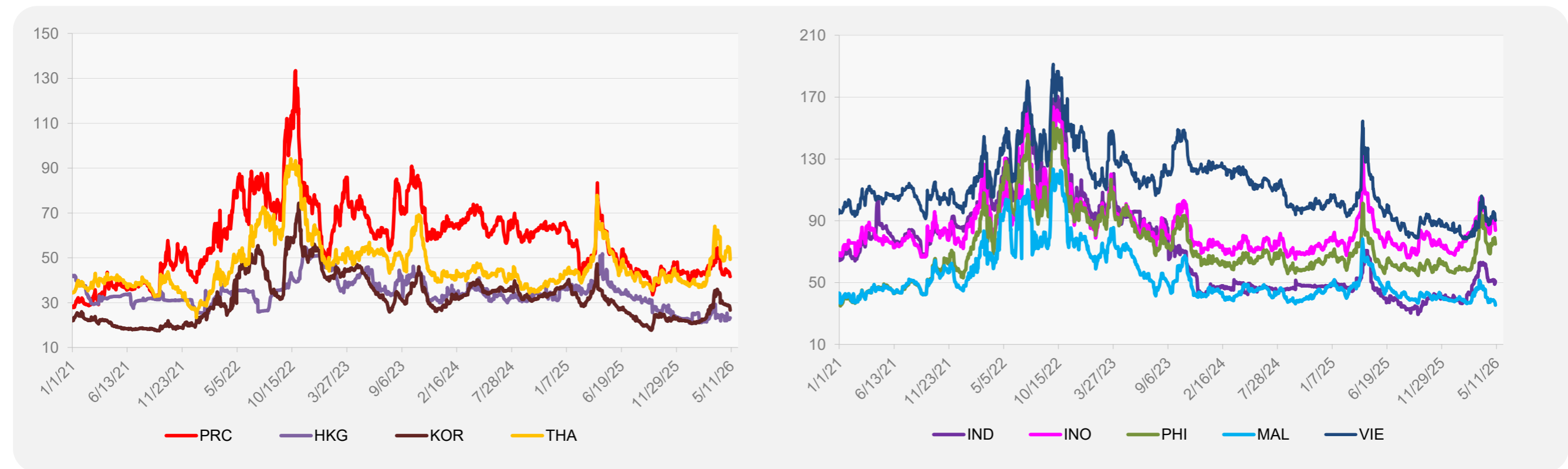


Source: ADB calculations using data from Bloomberg.

### 5-YEAR LOCAL CURRENCY GOVERNMENT BOND YIELDS (%)



### 5-YEAR CREDIT DEFAULT SWAP<sup>1</sup>



<sup>1</sup> In USD and based on sovereign bonds.  
Source: ADB calculations using data from Bloomberg.